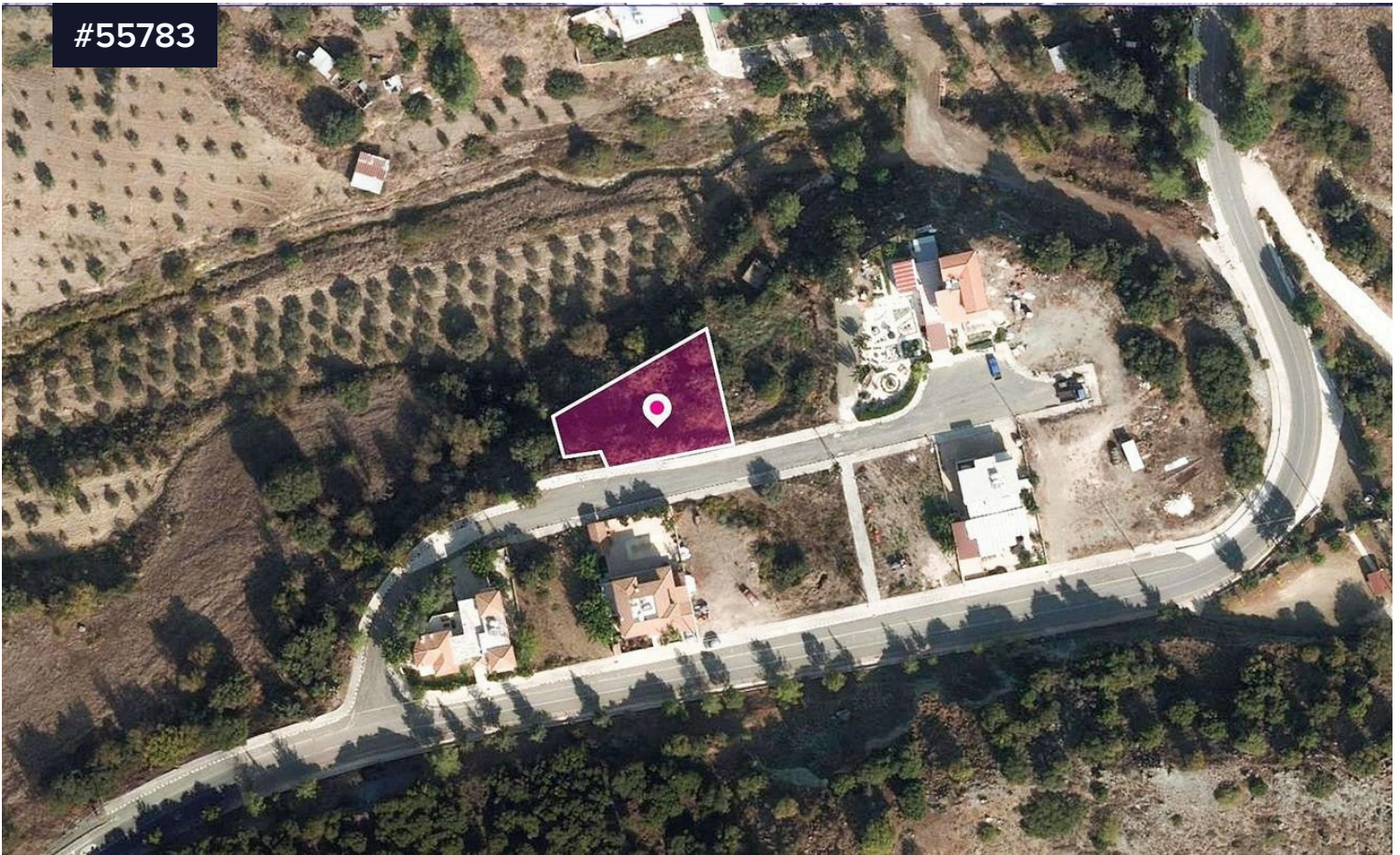


#55783



## Residential Plot in Kanaviou, Paphos

€35,000 <sup>+VAT</sup>

Area

 747 m<sup>2</sup>

Type

Building Plot

Elevated residential plot situated in a rapidly developing neighbourhood in Kannaviou, Paphos District. Property Highlights: • Total Plot Area: 747sq.m. • Road Frontage: Approx. 28m. Key Features: This residential plot features approximately 28m. of road frontage on a registered asphalted and benefits from adjoining green area on the western and northern boundaries, offering open countryside views. It is fully served by nearby infrastructure including water, electricity, and telecommunications. Location: • Approx. 50m. north of the Kannaviou–Ayios Dimitrianos road • Approx. 400m. from Kannaviou village center, with easy access to surrounding communities and the main road network. Zone: The property falls within Residential Zone H2, with a building coefficient of 90%, coverage of 50%, and

