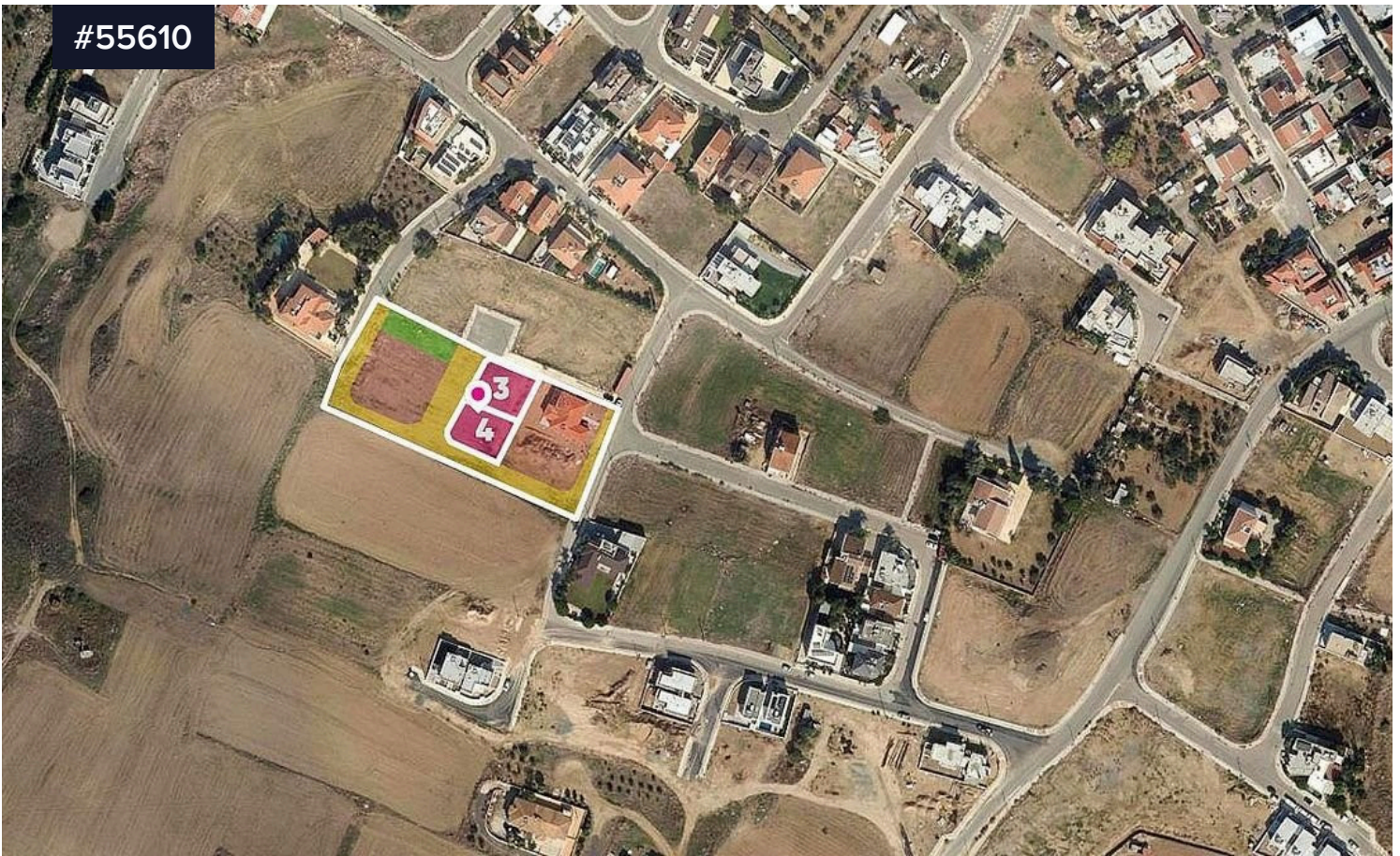


#55610



(Share) Residential field in Geri, Nicosia

€160,000 ^{+VAT}

Area

 5268 m²

Type

Building Plot

A 33% share of a residential field, corresponding to approximately 1,756sq.m. of a total 5,268sq.m. situated in Geri, Nicosia District. High-potential residential parcel situated in the rapidly developing outskirts of Geri, ideal for a contemporary housing complex or private estate. Property Highlights: •Total Field Area: 1/3 share of 5.268sq.m. corresponding to approx. 1,756sq.m. •Access: Exceptional dual access via two registered asphalt roads: Agias Lavras Street (50m frontage) on the eastern border and Agias Sophias Street (30m frontage) on the western border. •Terrain: Level, rectangularly shaped surface, offering maximum building efficiency and ease of construction. Key Features: A versatile land parcel ideal for high-density residential development or a long-term investment. It provides a peaceful suburban environment

