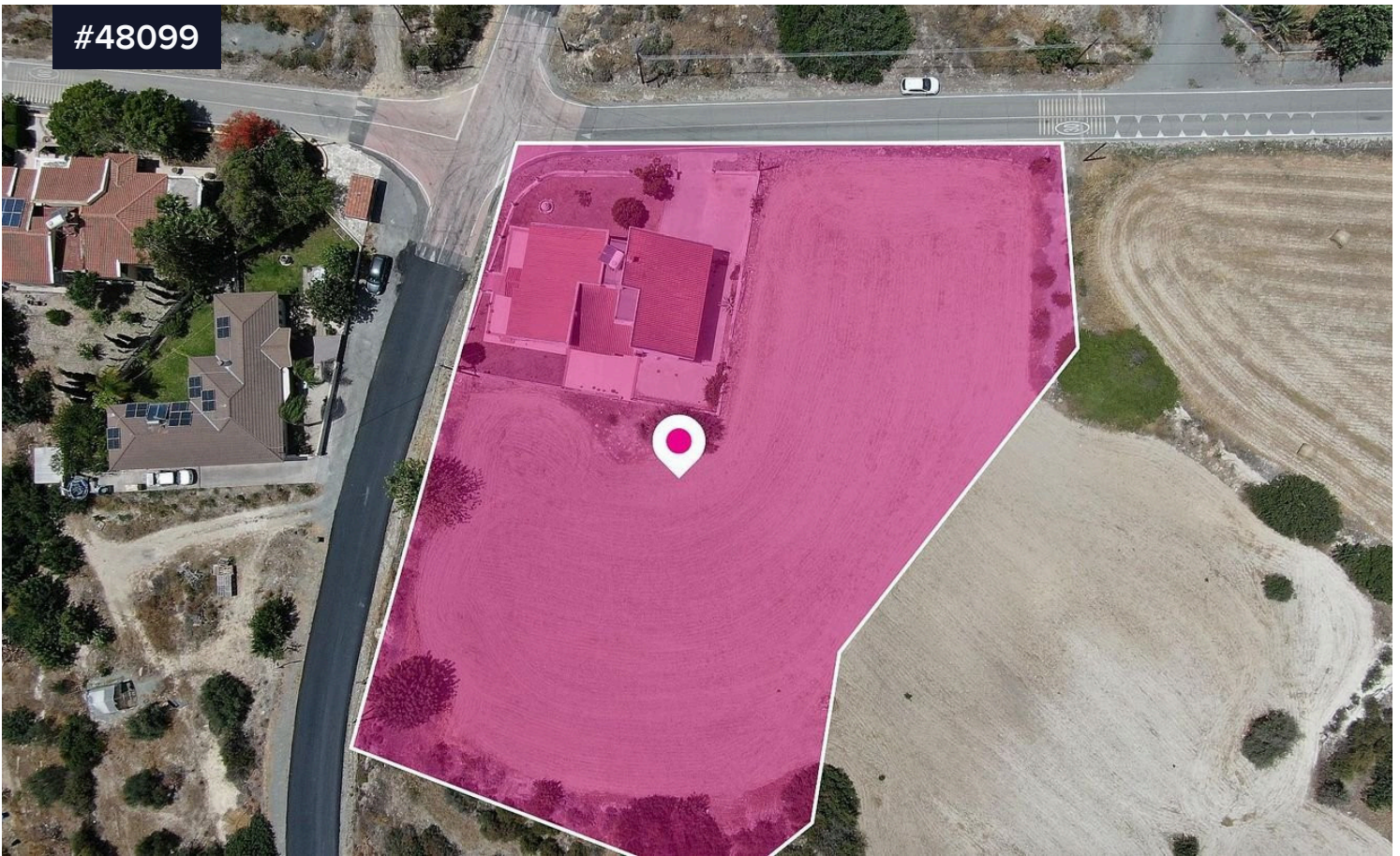


#48099



## Share of a residential field in Choirokitia, Larnaka

€79,000 <sup>+VAT</sup>

Area

 **2343 m<sup>2</sup>**

Type

**Field**

A 50% share (approximately 2.343 sq.m) of a residential field extending to about 4.686 sq.m. in total, situated in Choirokitia, Larnaka.

The field is a corner parcel with a rectangularly shaped and a flat surface.

The 50% share correspond to the empty field not on the house.

Access to the field is via two registered roads with total frontage of approximately 132m. Within the field there is a house.

No distribution agreement in place.

The asset is located approximately 500m southeast from the community of Choirokitia and approximately, 600m southwest from the

