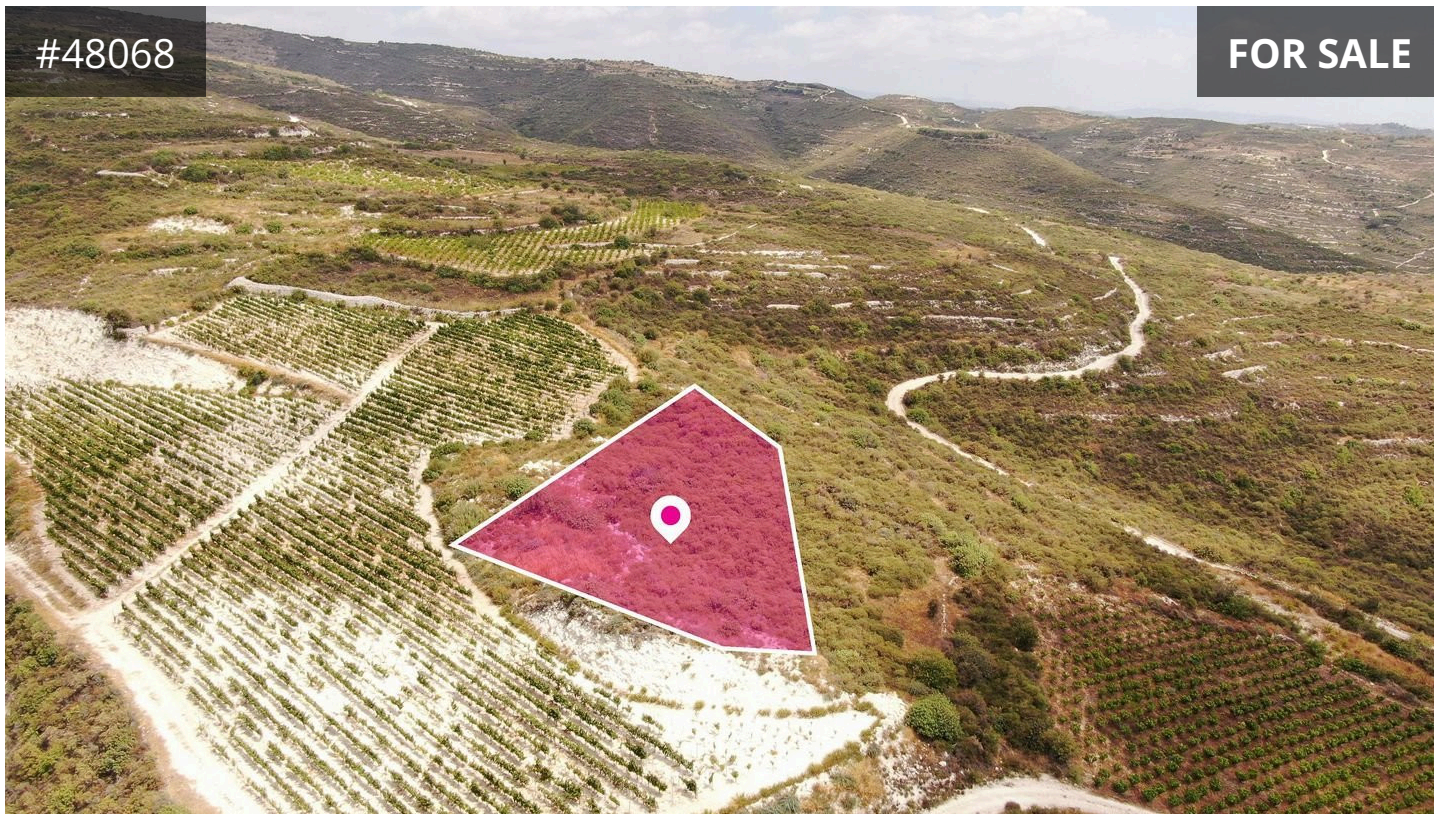


#48068

FOR SALE



Limassol, Vouni

  
KALOGIROU  
REAL ESTATE

## Description

€2,500

Agricultural field, extending to about 1,673 sq.m. in total, located in the village of Vouni, in the district of Limassol. The field has a triangular shape and a sloping surface towards the northwest. It is landlocked and is located approximately 1.9 km northwest of the densely populated area of the village and approximately 1.80 km northwest of the Vounio - Agios Ambrosios road.

TYPE

Field

The property falls within Urban Planning Zone Γ3 (Agricultural zone), with a building and coverage factor of 10%, 2 floors, and a height 8.3m allowance.

GPS coordinates: 34.840541, 32.823970

[kalogirourealestate.com](http://kalogirourealestate.com)