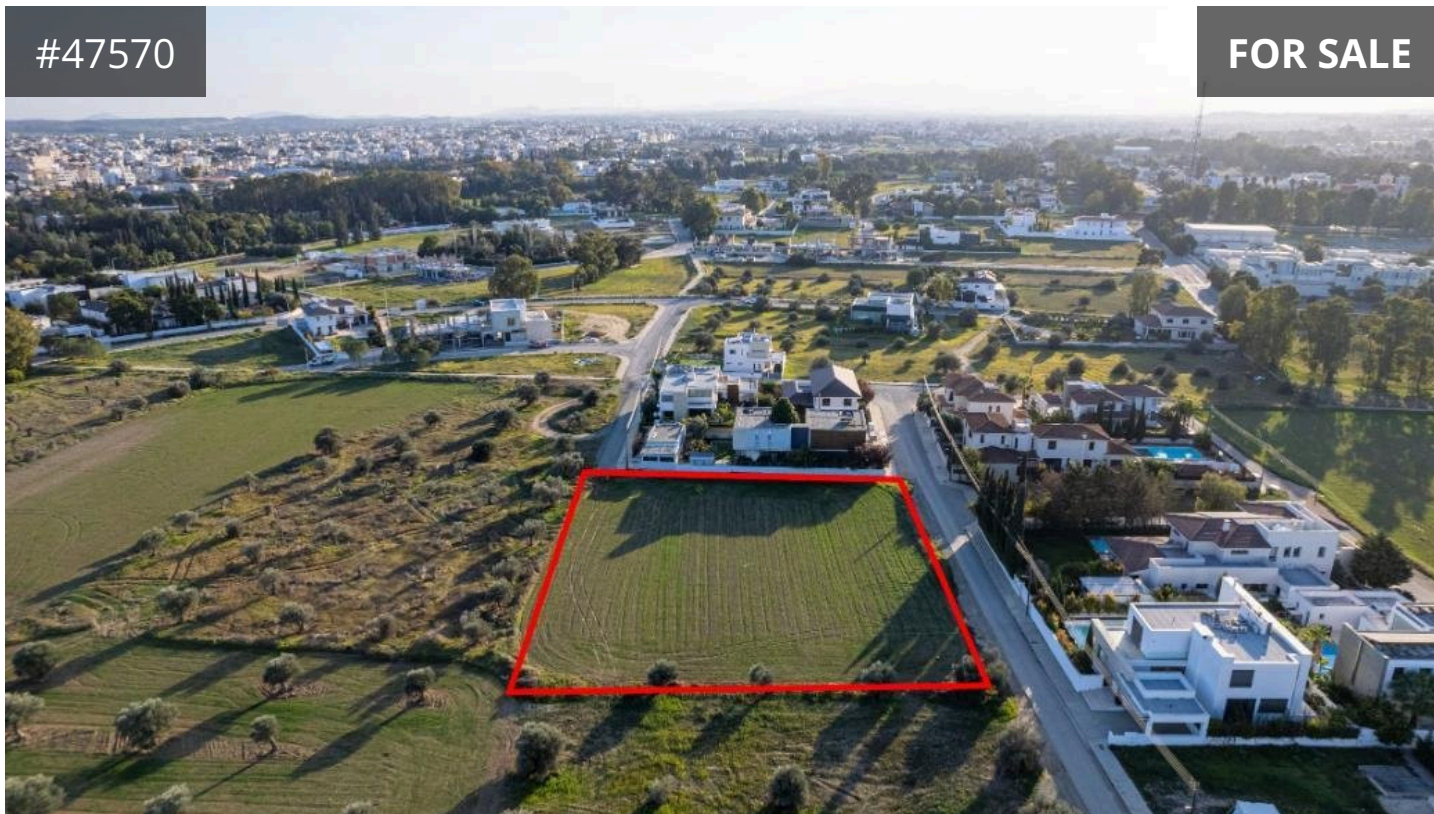


#47570

FOR SALE

3336 m² Area
KALOGIROU
REAL ESTATE

Description

€125,000

The property is a shared (12,5%) residential field in Chryseleousa. It is located 200m from K-Cineplex and 600m from Eleonon avenue. The field has a total area of 3,336sqm (the corresponding land area is approximately 417sqm). It abuts Markou Botsari street with a total frontage of 63m and Alekou Sofokleous street with a frontage of 5m. Opposite its southwestern boundary, there is a public green area. The asset offers close proximity to all amenities and easy access to Nicosia's city center.

TYPE	Building Plot
PLOT	3336 m ²

kalogirourealstate.com