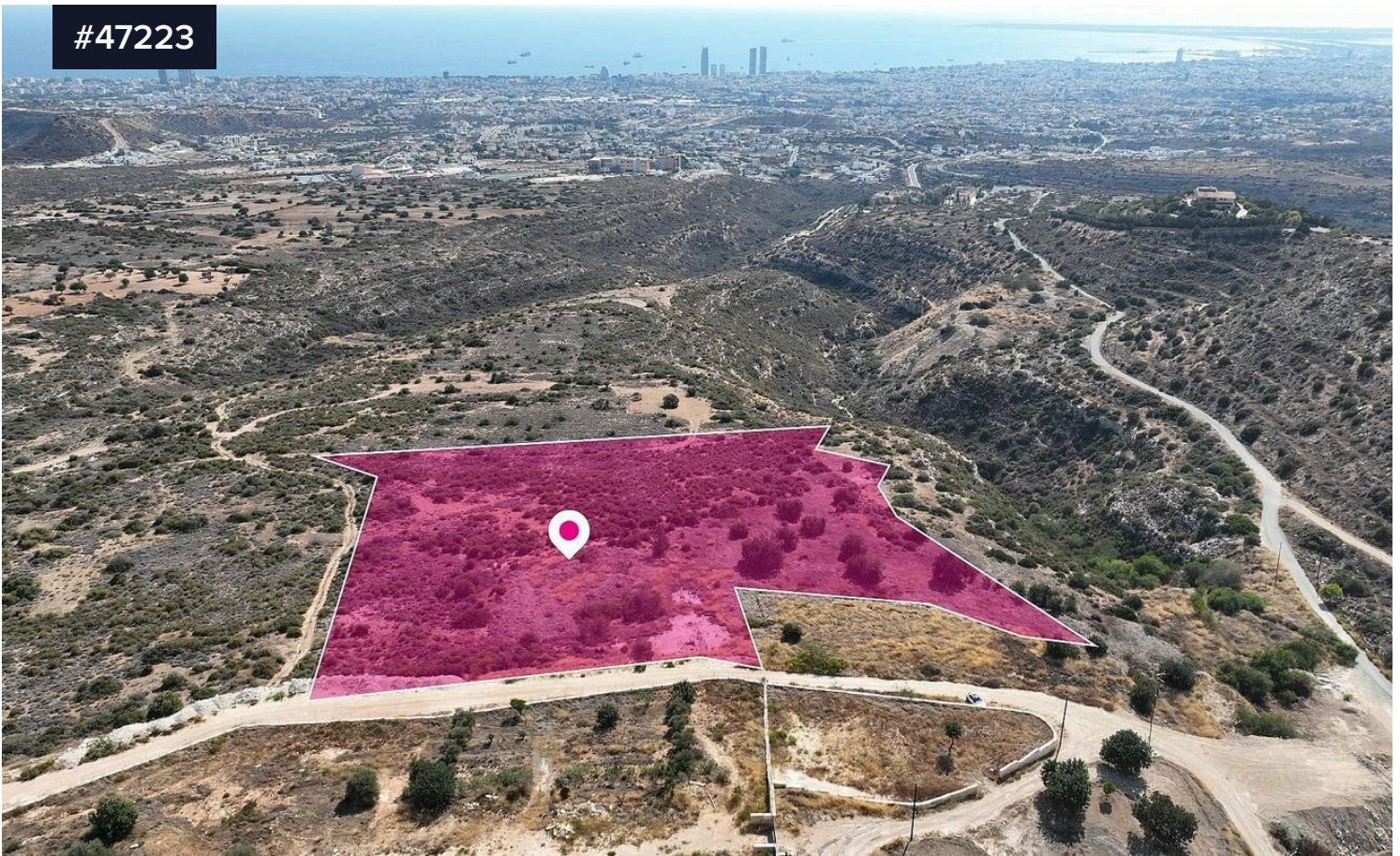


#47223



(Share) Agricultural Field, Agios Athanasios, €160,000 Limassol

Area

 3135 m²

Type

Field

A 12.5% share, which corresponds to 3,135.5m² of 25,084m² in total. It abuts government land and a registered pathway on its northern border with a total frontage of approx. 83m. Additionally the asset is located on a hill and offers an excellent view of the sea and the city.

The asset is located in Agios Athanasios, Limassol approximately 1.9km west of the private school "Golden Oak", 3.5km northwest of the private school "Foley's School" and "German Oncology Centre" and 300m west of the main asphalt road Limassol - Mathikoloni.

The property falls within Zone Γα4, with a building coefficient of 10%,

