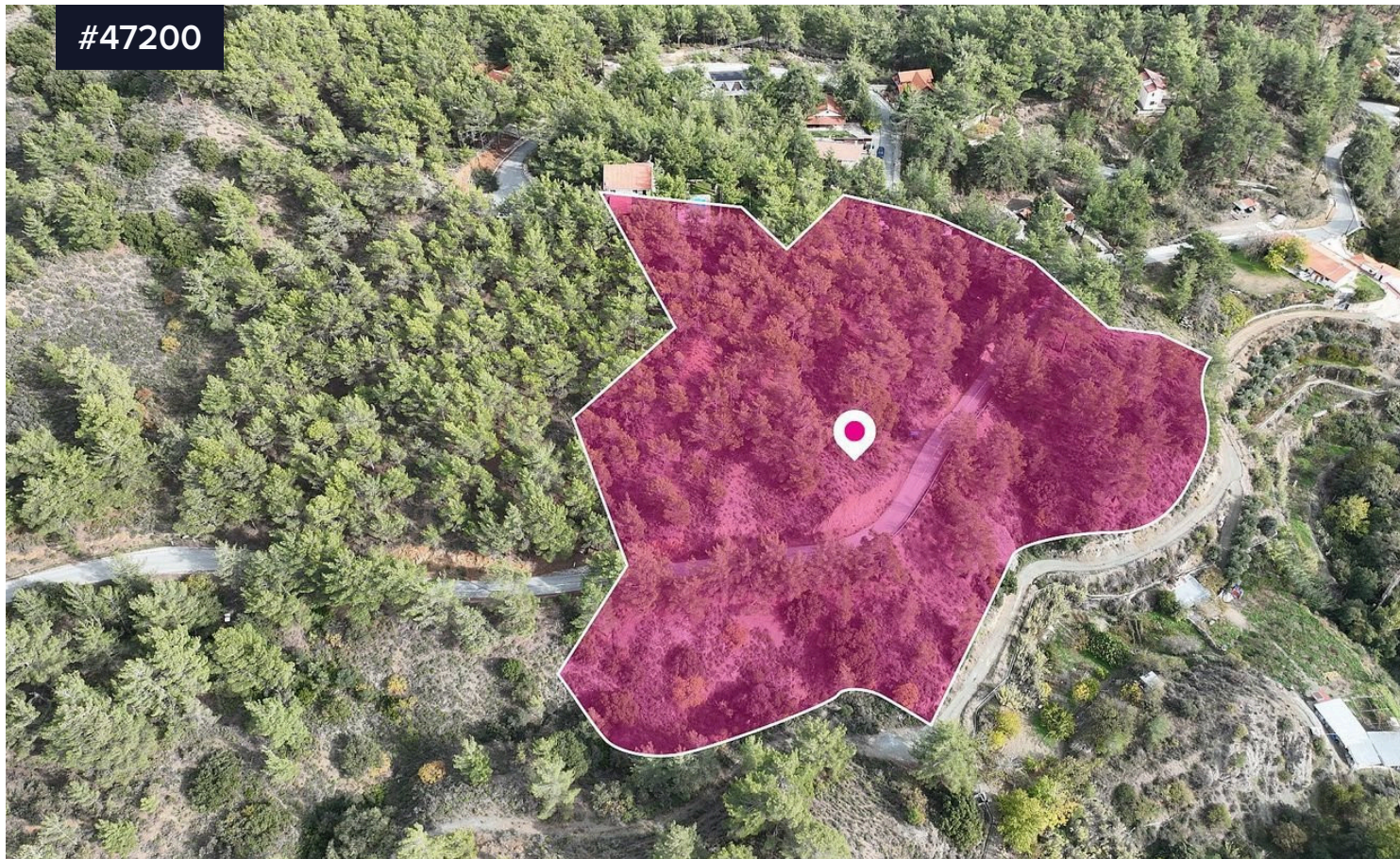


#47200



## (Share) Residential field in Pera Pedi, Limassol

€52,000 <sup>+VAT</sup>

 Pera Pedi, Limassol

Area

 2217 m<sup>2</sup>

Type

Building Plot

17% share of a residential field of 13.044 sq.m. in total. Access to the field is via a registered road with a total frontage of approximately 54m.

The asset is located approximately 4km from B8 motorway and approximately 1.1 from Pera Pedi community centre.

The property falls within Zone H7, with a building coefficient of 15%, coverage of 15%, and permission for 2 floors (8.3m) of construction.

