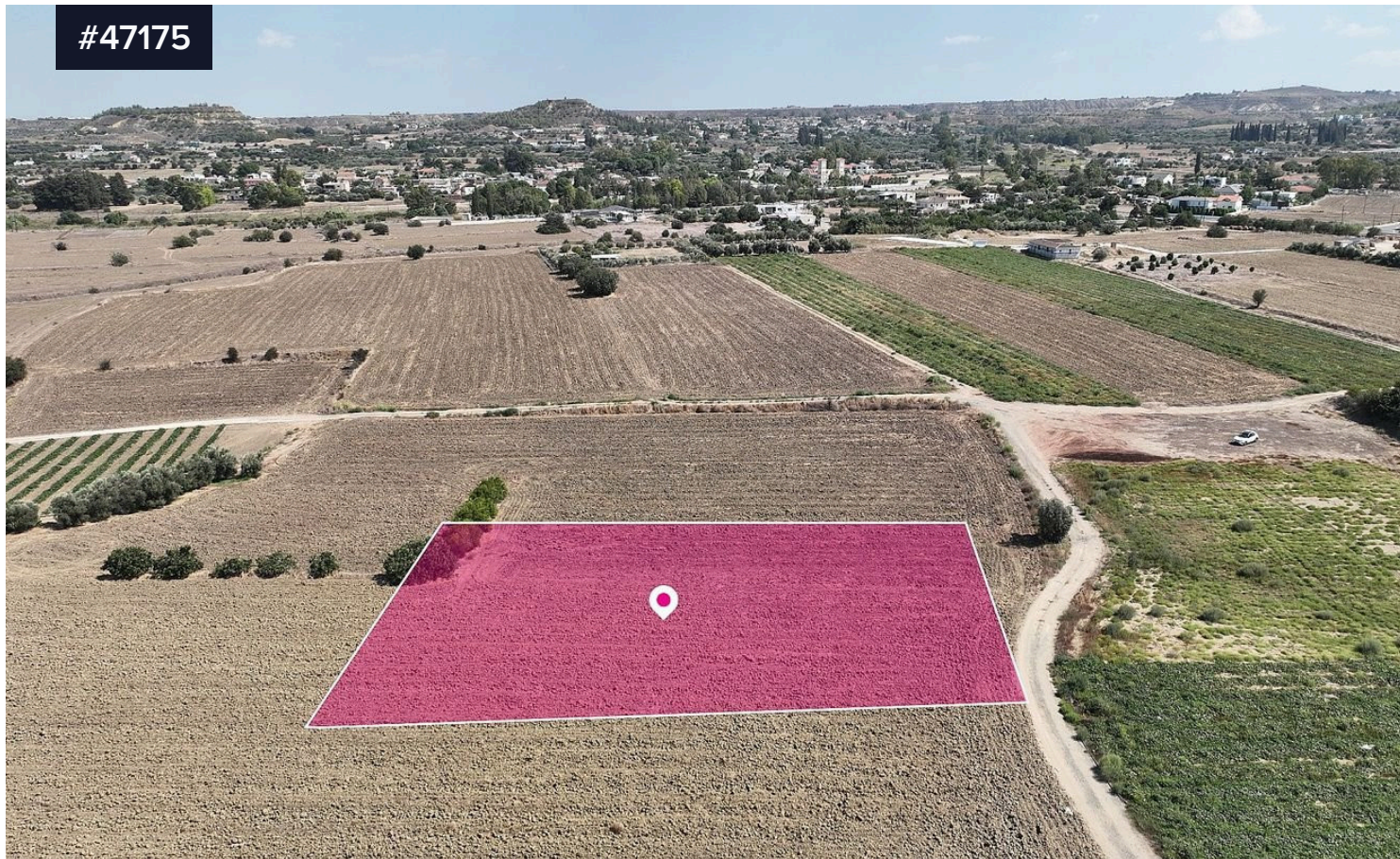


#47175



## Residential field in Episkopeio , Nicosia

€55,000 <sup>+VAT</sup>

 Episkopeio, Nicosia

Area

 1673 m<sup>2</sup>

Type

Field

Residential field, extending to about 1,673 sq.m. in total. The property has a rectangular shape and a flat surface. Access to the field is via a dirt road with total frontage of approximately 10m.

The asset is located approximately 3km from the motorway and approximately 1.7km from Episkopeio community center.

The property falls within Zone H4, with a building coefficient of 40%, coverage of 25%, and permission for 2 floors (8.3m) of construction.

