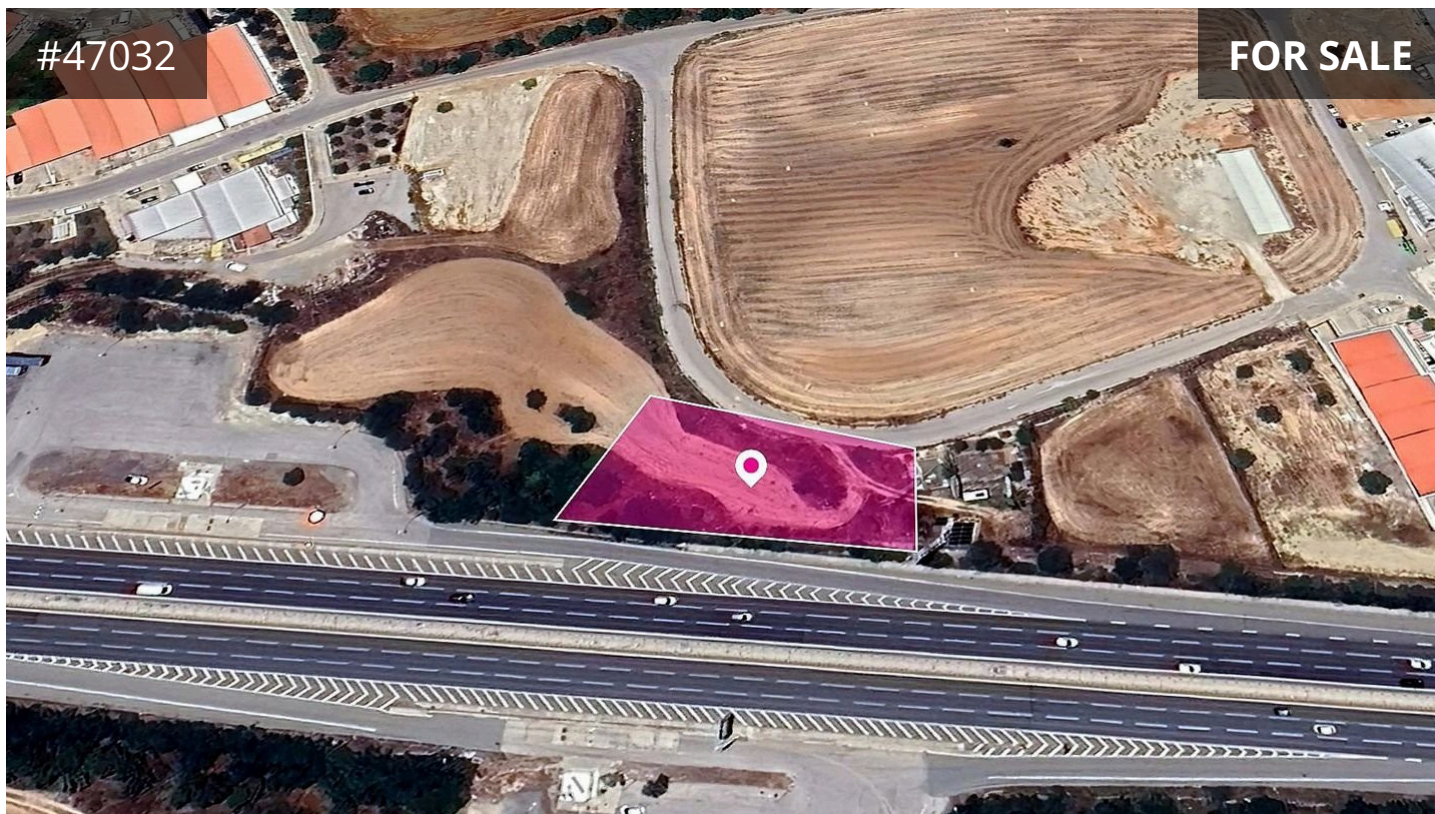


#47032

FOR SALE




KALOGIROU
REAL ESTATE

Description

€125,000

The land development is located in Latsia Municipality, Nicosia District, a short distance west of the old Nicosia - Limassol main road and it abuts along its western boundary onto Nicosia - Limassol highway with a frontage of approximately 76 meters.

TYPE

Field

The field has almost rectangular shape with fairly level surface with a slight incline to the northwest and partly abuts onto registered asphalted road with a frontage of approximately 50 meters.

The share for sale is 75% which corresponds to 1.688,25 m².

The share of sale is 3/4, the property is undivided.

For more information please contact us.



kalogiourealestate.com