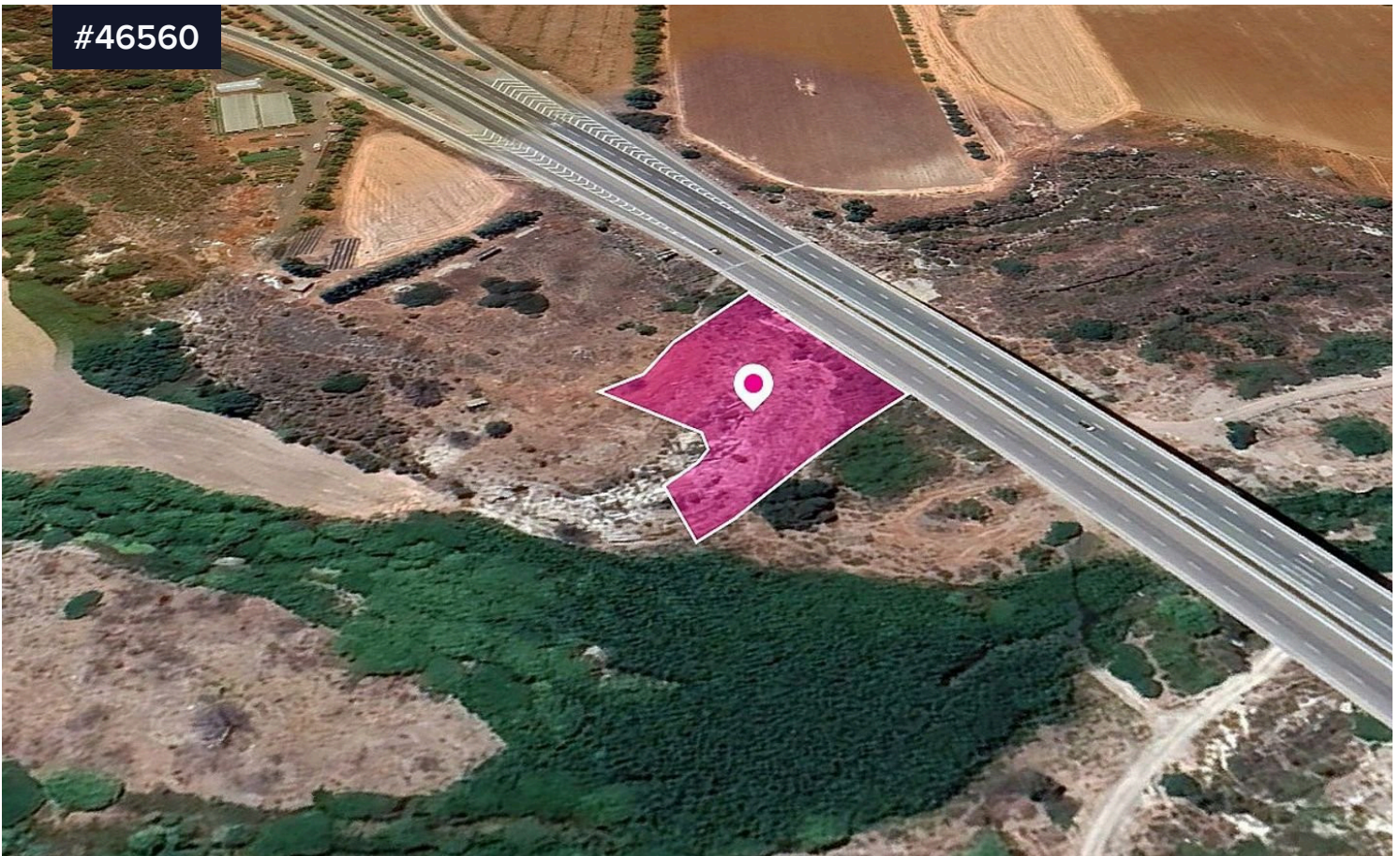


#46560



Field, Agia Varvara, Paphos

€10,500

Area

3270 m²

Type

Field

Field, extending to about 3,270 sq.m. in total.

The asset is located approx. 1.2km south-west from the center of Agia Varvara and on A6 motorway.

The property falls within a dual Zone Z1 (36%), with a building coefficient of 6%, coverage of 6%, and permission for 2 floors (8.3m) of construction and Zone Z3 (64%) , with a building coefficient of 1%, coverage of 1%, and permission for 1 floors (5m) of construction.

GPS coordinates: 34.747837 32.499672

