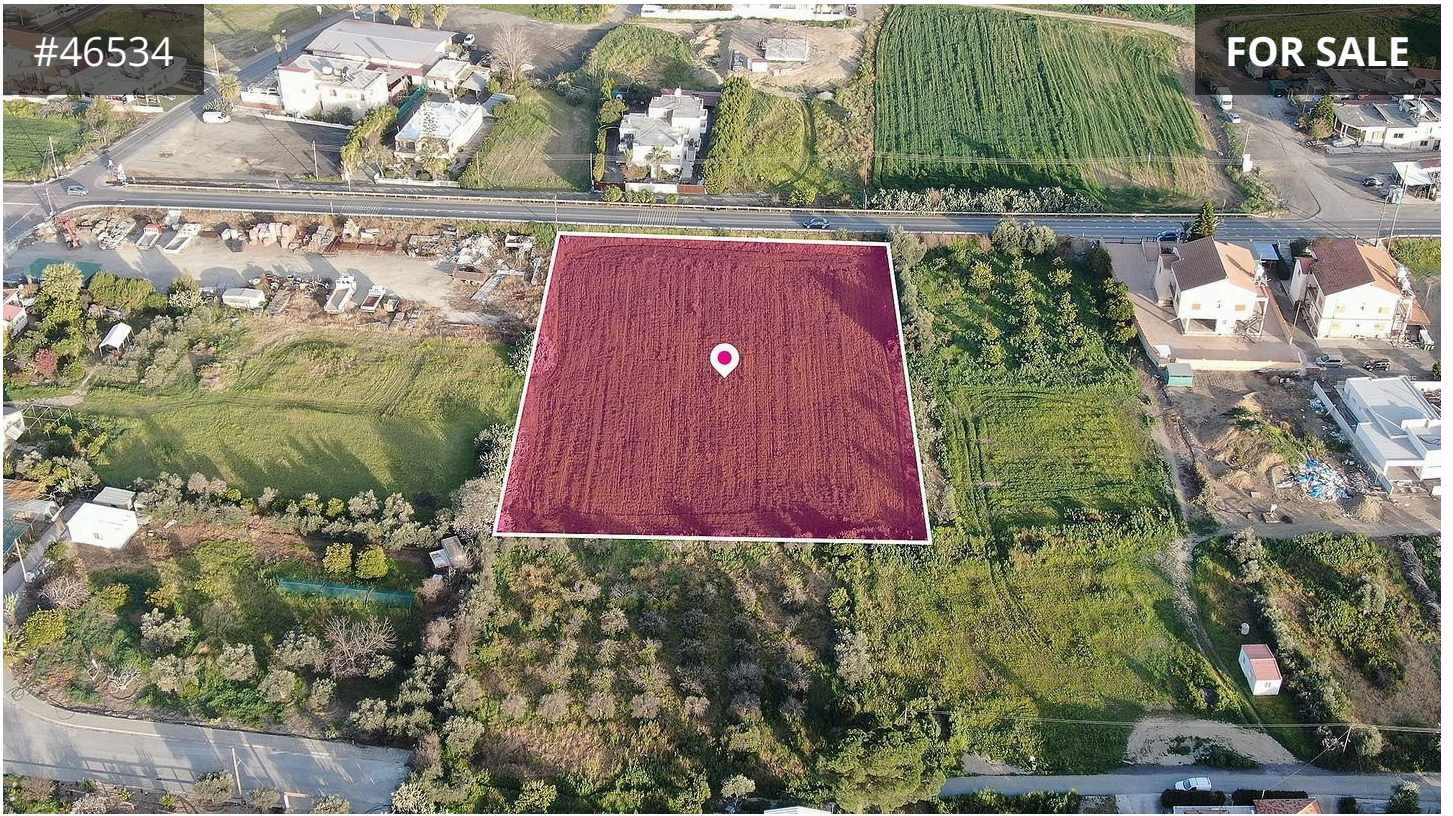


#46534

FOR SALE



Nicosia, Psimolofou



Description

€200,000

Residential field extending to about 5,119sq.m. in total. It has a rectangular shape and a relatively flat surface.

It is accessible via a registered road, Machera Avenue, with a total road frontage of approximately 58 meters.

The property is located about 230 meters from the center of Psimolofou village and fall within Zone H2, with a building coefficient of 90%, coverage of 50%, and permission for construction of up to 2 floors (8.3m) high.

TYPE

Field

