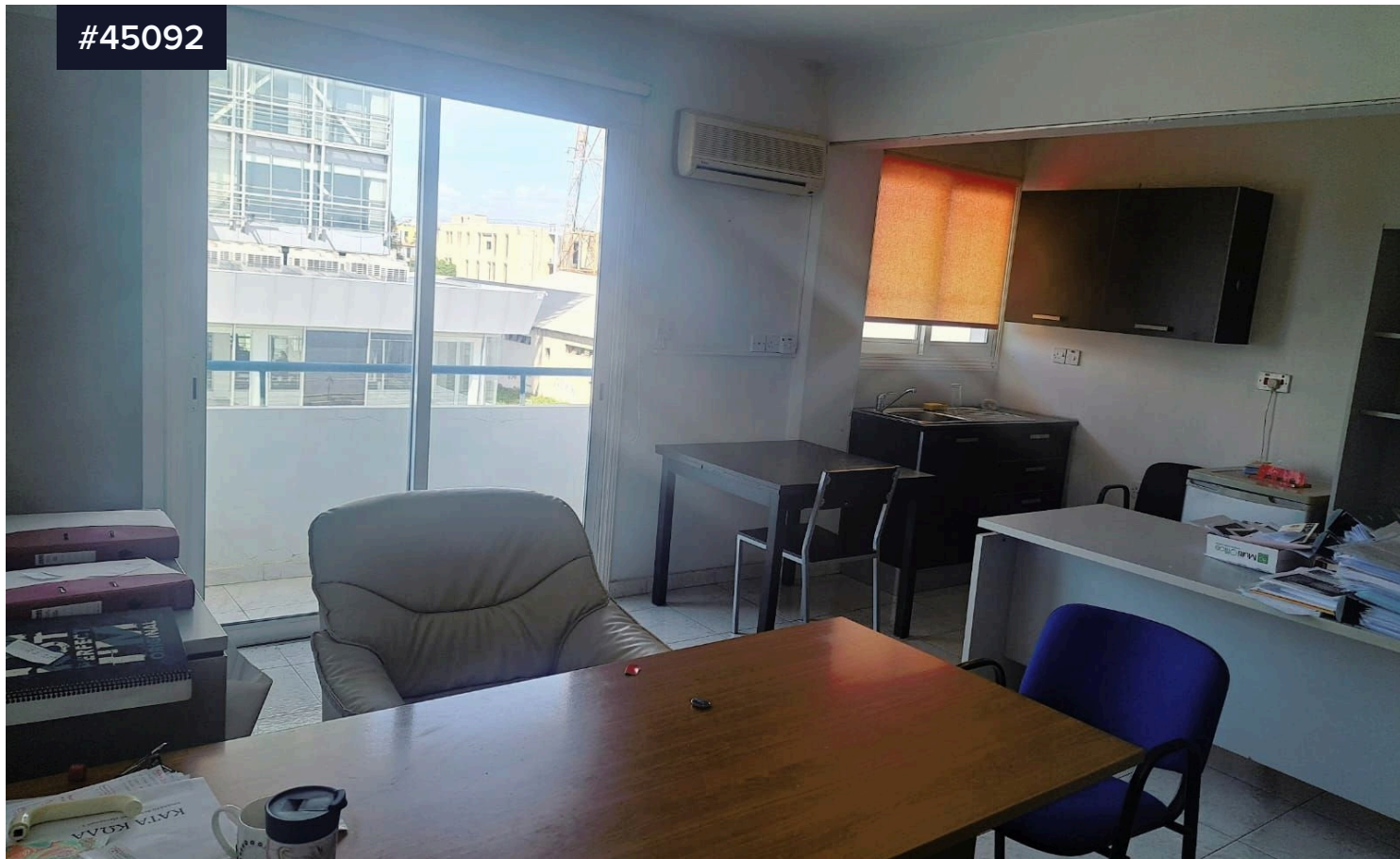


#45092



Second Floor Office in New Marina Larnaca

€950 /month

 New Marina-Port Area, Larnaca

Bathrooms

 1

Covered

 65 m²

Type

Office

Status

Used

Energy efficiency rating

 B

Second Floor Office for Rent in New Marina- Port Area, Larnaca. The office is very close to Larnaca Town Center, beach and New Marina area. Close to all amenities including supermarkets, banks, shops, schools, cafeterias, medical facilities and public transport.

Office for Rent in New Marina- Port Area. The office has covered area of 65 sq.m, consists of open plan kitchen, office area, bathroom with toilet, 2 separate spacious rooms, covered verandas that offer stunning view on the main street.

