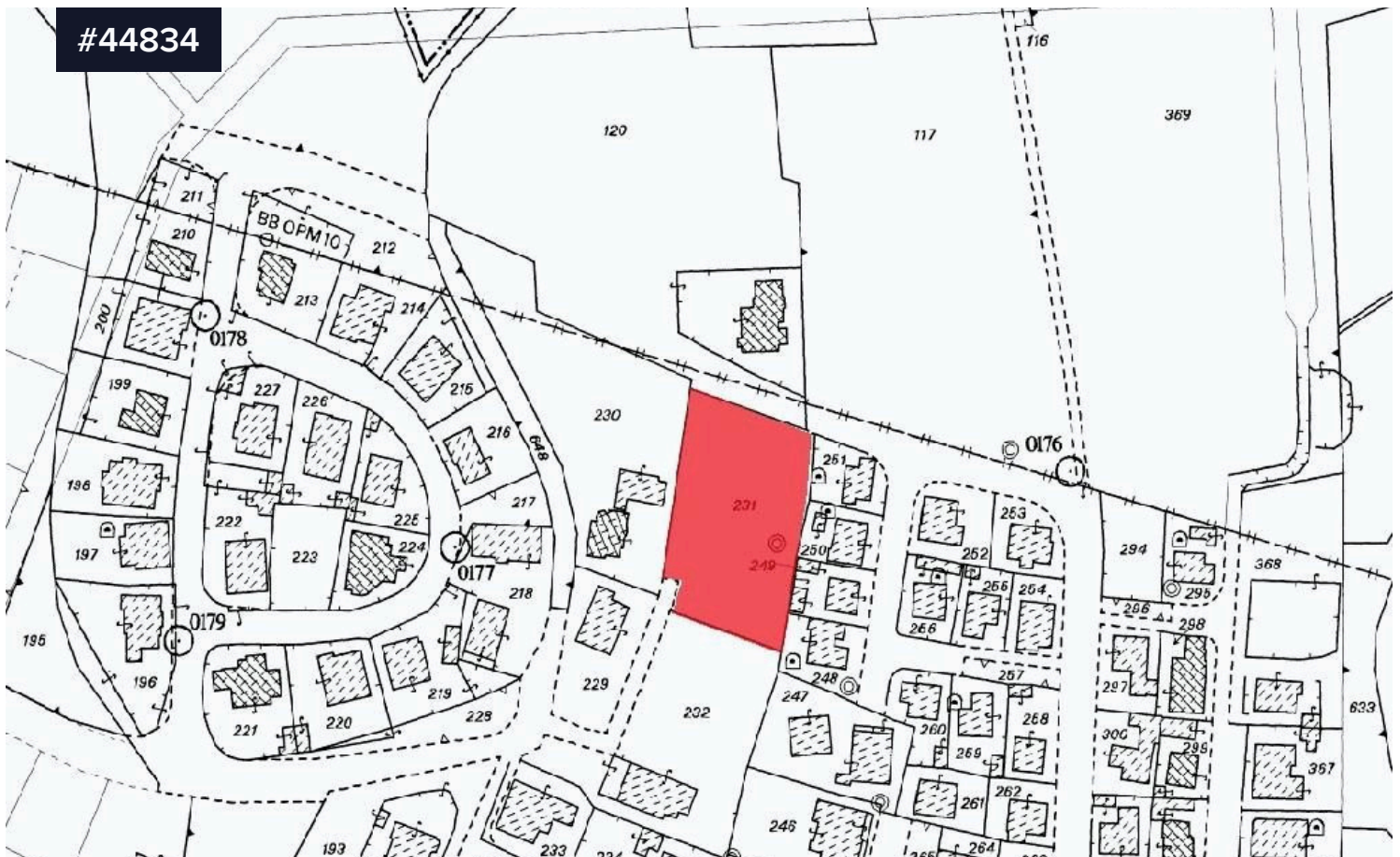


#44834



Share of Residential Land for sale in Ormideia area, Larnaca.

€45,000 +VAT

📍 Ormideia, Larnaca

Area

📏 1087 m²

Type

Development Land

Share of Residential Land for sale in Ormideia area, Larnaca. Close to all amenities including schools, supermarket, banks, shops, restaurants etc. Just a short drive to the beach. Easy access to Larnaca, Ayia Napa, Protaras, Paralimni motorway. A 15-minute drive to Ayia Napa and a 20-minute drive to Larnaca Town and Larnaca International Airport.

Available for sale is the 1/2 share of a residential field, which corresponds to an area of approximately 1,087 sqm, in Ormideia village in Larnaca District. The asset has a regular shape, even surface and

