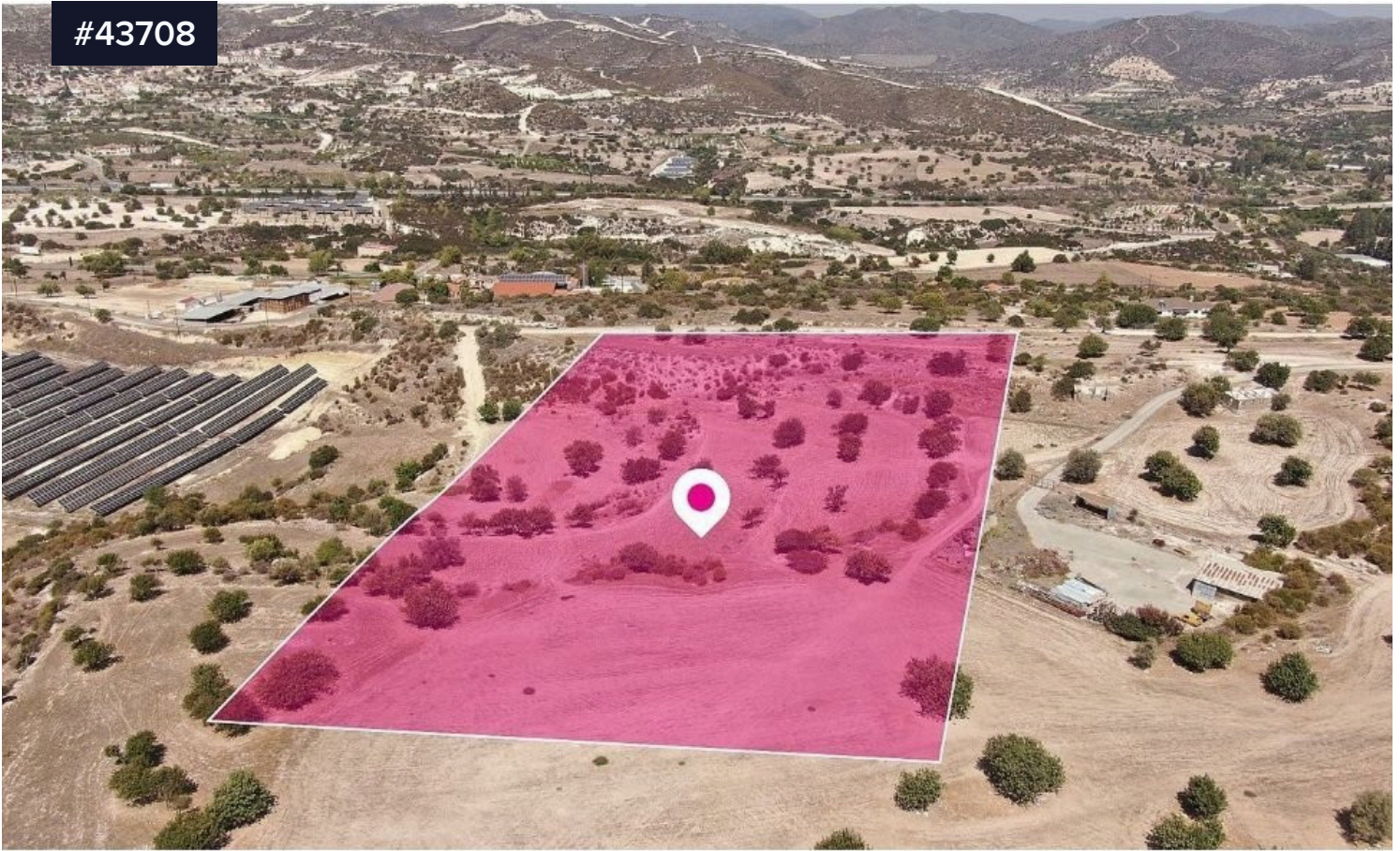


#43708



Agricultural Land for Sale in Skarinou Village, Larnaca

€103,000

 Skarinou, Larnaca

Area

 20473 m²

Agricultural Land for Sale in Skarinou Village, Larnaca .The land is close to amenities which are within close proximity as supermarket, restaurants etc. The asset is located close to Larnaca-Limassol motorway.

The land, extending to about 20473 sq.m. in total. The property is rectangularly shaped with a flat surface. Access to the land is via a registered road with total frontage of approx. 110m

Type

Field

Title deed

Yes

