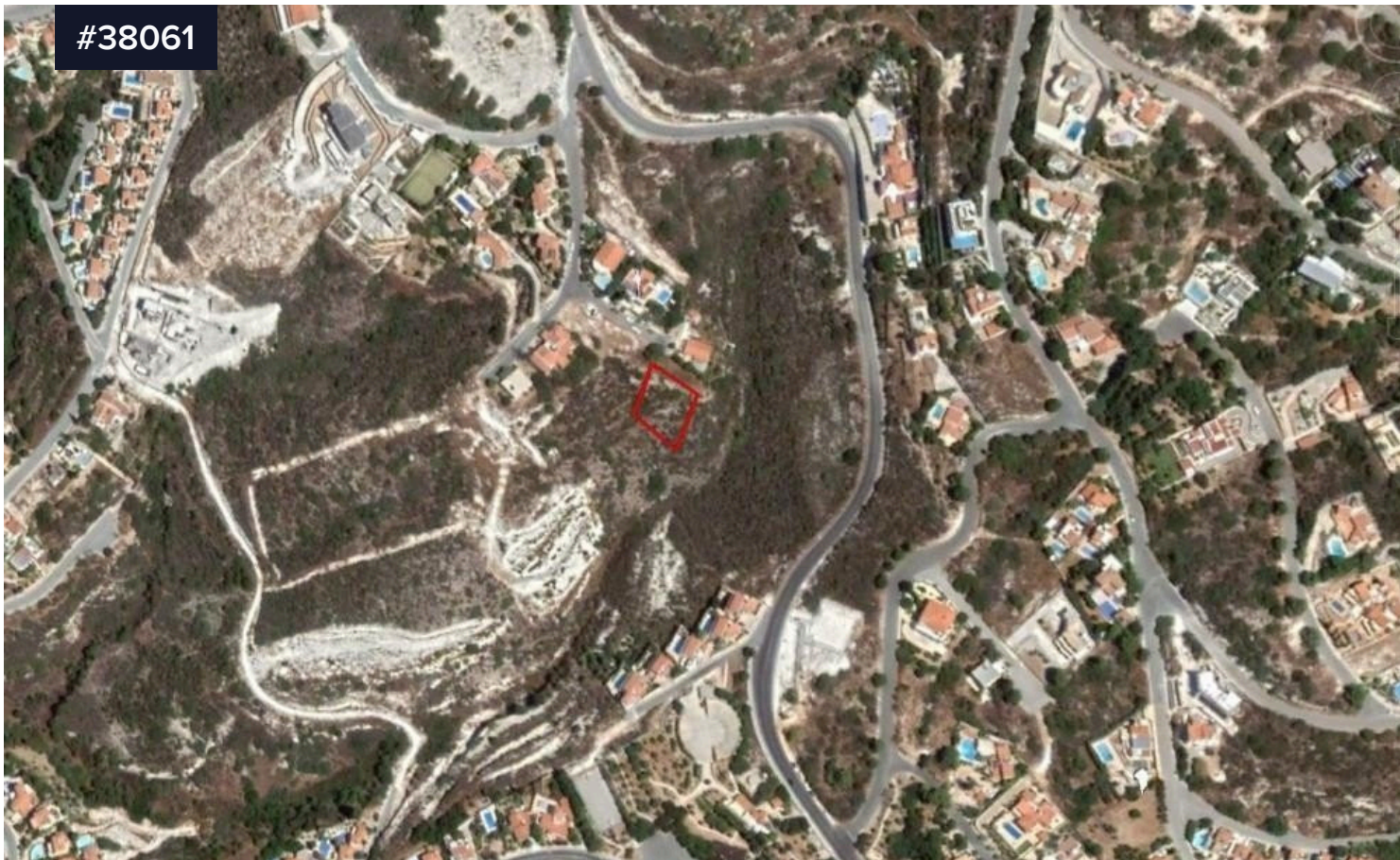


#38061



Half Share of Residential Plot in Tala, Paphos €42,000

 Tala, Paphos

Area

 781 m²

Type

Building Plot

- The property concerns 1/2 share of a residential plot in Tala, Paphos.
- It is located approximately 1,4Km northeast of Tala's centre and approximately 5km east of the sea.
- The plot has a flat surface, an area of approximately 390sqm (1/2 share of 781 sqm) and benefits from approximately 5m road frontage along a registered road on its west border.

The property is owned by Themis Portfolio Management Holdings

